

Hansastraße 40
80686 Munich

Tel. +49 89 57 99 - 0
Fax +49 89 57 99 - 910
info@obermeyer-group.com
www.obermeyer-group.com

The Belt region grows together

Rail link for the Fehmarn Belt crossing



Munich, 14.03.2022

In an engineering consortium with Ramboll and Arcadis, OBERMEYER was commissioned by DB Netz AG with the planning of two sections of the rail link to the Fehmarnbelt crossing.

In an engineering consortium with Ramboll and Arcadis, OBERMEYER was commissioned by DB Netz AG with the planning of two sections of the rail link to the Fehmarnbelt crossing.

The 19-kilometer-long Baltic Sea crossing across the Fehmarn Belt is the shortest connection between Central Europe and Scandinavia. By means of an immersed tunnel for road and rail traffic, the German island of Fehmarn is to be connected with the Danish island of Lolland.

Resilient rail link for the Fehmarn Belt crossing

The Danish project company Femern A/S is realizing the entire project, which includes not only the planned Fehmarn Belt tunnel but also a resilient rail link on the German and Danish sides. Denmark is responsible for the link between Fehmarn and Lolland.

DB Netz AG is planning and implementing the approximately 160 km long rail link to the Fehmarn Belt crossing on the German side, which runs from Lübeck to Puttgarden in the north of Fehmarn. This line, which is divided into ten sections, is now to be double-tracked, partly rebuilt and electrified.

It also includes the Fehmarnsund crossing between the German mainland and Fehmarn, which will also be realized as an immersed tunnel.

The traveling time from Hamburg to Copenhagen will thus be halved from around five to just two and a half hours.

All the measures are based on the international contract concluded in September 2008 between the Federal Republic of Germany and the Kingdom of Denmark on the construction of a fixed link across the Fehmarnbelt. The aim is to accommodate the steadily increasing traffic through Europe in the long term and on a sustainable basis.

"IG FBQ Bad-Schwartau-Haffkrug":

Technical lead and overall project management

OBERMEYER was commissioned by DB Netz AG in engineering consortium with Ramboll and Arcadis with the processing of the planning approval sections 1.1. (Bad Schwartau city area) and 1.2. (free section between Bad Schwartau and Haffkrug). The speed of the line is to be increased, the alignment changed in parts and it is to run parallel to the A1 autobahn. In addition, there will be new stops and stations.

Within the "IG FBQ Bad-Schwartau-Haffkrug", as the engineering consortium is called, OBERMEYER will be responsible for the technical management and the overall project management. The contract also includes parts of the planning trades rail, road and engineering structures as well as structural planning and planning within the scope of technical equipment.

Long-term participation in the project

OBERMEYER was involved in the planning of the entire Fehmarnbelt Fixed Link at an early stage: as early as 2011 with design planning, later, among other things, with consulting services in the field of tunnel construction for the Fehmarnbelt Tunnel as well as with noise and vibration investigations in Section 1 of the rail link in the urban area of Lübeck.

OBERMEYER was also commissioned with the comparison of variants of the Fehmarn Sound crossing between the German mainland (Schleswig-Holstein) and the island of Fehmarn. This assignment included the development of an evaluation methodology as well as the execution of a route selection procedure. From the evaluation of around 200 variants for new construction or expansion, the construction of an immersed tunnel as a fixed link was preferred.

About OBERMEYER:

The OBERMEYER Group is one of the largest independent German planning companies and has been an expert in overall planning and qualified specialist planning for more than 60 years.

With over 1,400 employees worldwide, OBERMEYER provides planning services in the fields of buildings, infrastructure and building services engineering. Together with the scientific research institutes, almost all specialist fields of engineering and construction planning are covered.

Inspired by the innovation spirit of its founder Leonhard Obermeyer, the company creates intelligent, forward-looking solutions using the latest digital tools and agile methods.

Images:

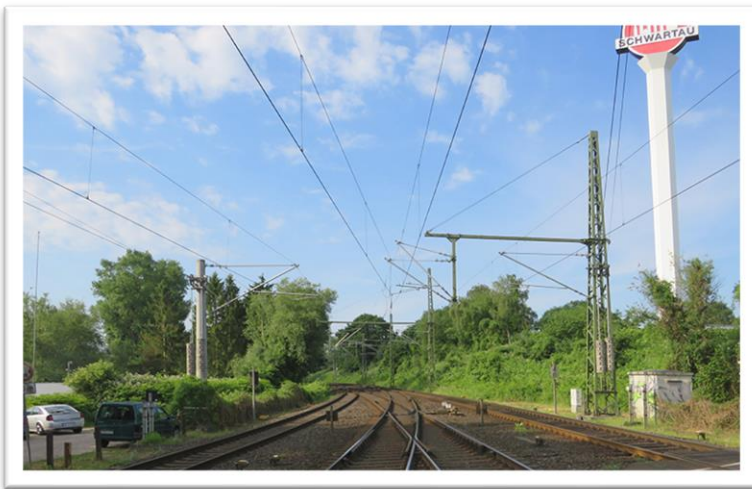
We provide the following photographic material exclusively for publication in the context of this press release.

Please quote "DB Netz AG" as the source of the images when publishing.



Caption:

Visualization of the immersed tunnel of the Fehmarnsund crossing between Schleswig-Holstein and Fehmarn. OBERMEYER had been commissioned with the comparison of variants in 2020/21.



Caption:

The current contract covers the processing of two planning approval sections of the German rail link to the Fehmarn Belt crossing. The picture shows an inventory from Bad Schwartau.

Specimen copies:

Please send us two specimen copies. For online publications, please send the corresponding link to presse@obermeyer-group.com. Thank you very much!

Your contact for press and public relations:

OBERMEYER Gruppe
Hansastraße 40
80686 Munich

Elisabeth K. Ponader
Tel.: +49 89 57 99 – 672
E-Mail : presse@obermeyer-group.com